



CCP2 Polyclonal Antibody

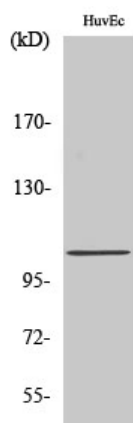
Catalog No	YP-Ab-16146
Isotype	IgG
Reactivity	Human;Mouse
Applications	WB;IHC;IF;ELISA
Gene Name	AGBL2
Protein Name	Cytosolic carboxypeptidase 2
Immunogen	The antiserum was produced against synthesized peptide derived from human CBCP2. AA range:731-780
Specificity	CCP2 Polyclonal Antibody detects endogenous levels of CCP2 protein.
Formulation	Liquid in PBS containing 50% glycerol, 0.5% BSA and 0.02% sodium azide.
Source	Polyclonal, Rabbit,IgG
Purification	The antibody was affinity-purified from rabbit antiserum by affinity-chromatography using epitope-specific immunogen.
Dilution	WB: 1/500 - 1/2000. IHC: 1/100 - 1/300. ELISA: 1/40000.. IF 1:50-200
Concentration	1 mg/ml
Purity	≥90%
Storage Stability	-20°C/1 year
Synonyms	AGBL2; CCP2; Cytosolic carboxypeptidase 2; ATP/GTP-binding protein-like 2
Observed Band	104kD
Cell Pathway	Cytoplasm, cytosol . Cytoplasm, cytoskeleton, microtubule organizing center, centrosome, centriole . Cytoplasm, cytoskeleton, cilium basal body . Colocalizes with gamma-tubulin in the centrioles and with glutamylated tubulin in the basal bodies of ciliated cells. .
Tissue Specificity	Lung,Testis,
Function	cofactor:Binds 1 zinc ion per subunit.,function:May play a role in the processing of tubulin.,sequence caution:Translated as Lys.,similarity:Belongs to the peptidase M14 family.,
Background	cofactor:Binds 1 zinc ion per subunit.,function:May play a role in the processing of tubulin.,sequence caution:Translated as Lys.,similarity:Belongs to the peptidase M14 family.,
matters needing attention	Avoid repeated freezing and thawing!



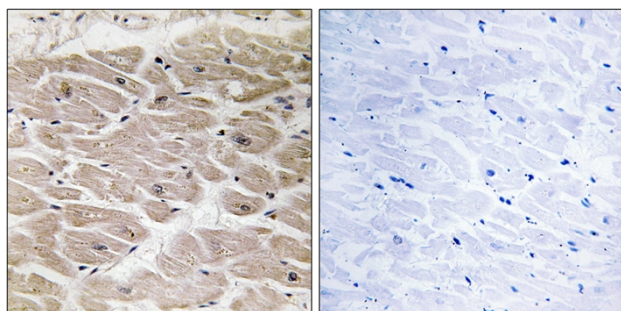
Usage suggestions

This product can be used in immunological reaction related experiments. For more information, please consult technical personnel.

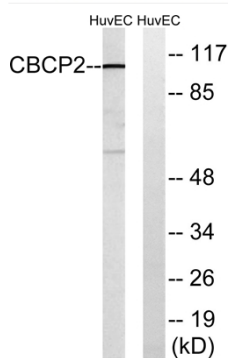
Products Images



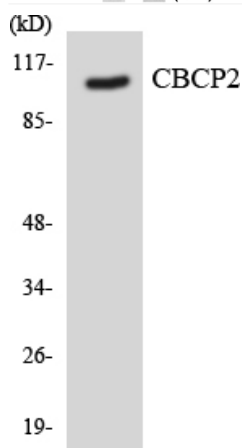
Western Blot analysis of various cells using CCP2 Polyclonal Antibody diluted at 1:2000



Immunohistochemistry analysis of paraffin-embedded human heart tissue, using CBCP2 Antibody. The picture on the right is blocked with the synthesized peptide.



Western blot analysis of lysates from HUVEC cells, using CBCP2 Antibody. The lane on the right is blocked with the synthesized peptide.



Western blot analysis of the lysates from Jurkat cells using CBCP2 antibody.